

# EON





# The perfect first car.

An ideal blend of style, performance and economy, the Hyundai EON is the perfect choice for those who seek that extra value.







# Stylish Exterior

Hyundai EON is undoubtedly a head turner. With its uninterrupted flowing curves and strong character lines, it's a car that's modern and stylish like nothing else.

Moon Shaped Tail Lamps | Body Colour Door Handles  
Body Colour Mirrors



Front Fog Lamps



Chrome Grille



Integrated Spoiler with HMSL



Full Wheel Cover



Wraparound Headlamps





# Plush Interiors

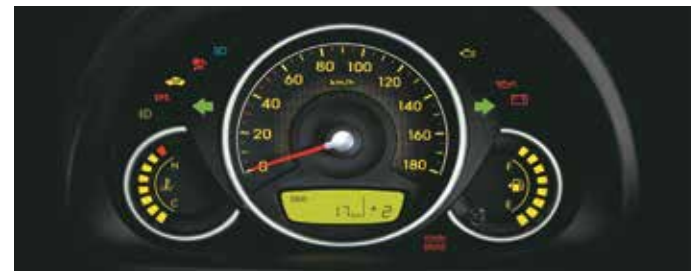
When it comes to comfort or convenience, the Hyundai EON boasts of both in equal measure. It contains all the features you'll ever need; well designed and placed within easy reach.



Internally Adjustable Outside Mirrors



MDPS with Tilt Steering



Instrument Panel with Gear Shift Indicator



AC & 2 DIN Audio with AUX-in & USB Ports



# Safety and Convenience



Luggage Space



Dashboard Storage



Keyless Entry & Central Locking



Power Windows



Rear Parcel Tray



Map Pocket with Bottle Holder



Driver Side Airbag

The Hyundai EON offers convenience beyond compare with ergonomically designed utility features and ample storage space. The interiors, an amalgamation of breathtaking design and function, make the Hyundai EON a statement like none other.



# Superior Mileage

Hyundai has always been committed to making cars that are fuel efficient and easy to maintain. The EON is no exception. Powered by a mileage-friendly engine and features that enhance fuel-efficiency, this car is easy on your pocket.



0.8L iRDE Engine



1.0L Kappa Dual VVT Engine

KEY FEATURES

	0.8L iRDE					1.0 L Kappa	
	D-LITE	D-LITE+	ERA+	MAGNA+	SPORTZ	ERA+	MAGNA+(O) (O)
FUEL OPTION							
Petrol	S	S	S	S	S	S	S
SAFETY							
Reinforced Body Structure	S	S	S	S	S	S	S
Front & Rear Seat Belts	S	S	S	S	S	S	S
Child Safety Rear Door Locks	S	S	S	S	S	S	S
Engine Immobilizer	S	S	S	S	S	S	S
Inside Rear View Mirror	S	S	S	S	S	S	S
Central Locking	-	-	-	S	S	-	S
Keyless Entry	-	-	-	-	S	-	S
Front Fog Lamps	-	-	-	-	S	-	S
Driver Airbag	-	-	O	O	S	-	S
EXTERIOR							
Clear Headlamps	S	S	S	S	S	S	S
Clear Taillamps	S	S	S	S	S	S	S
Chrome Tip Radiator Grille	S	S	S	S	S	S	S
Integrated Spoiler	S	S	S	S	S	S	S
Tinted Glass	-	-	S	S	S	-	S
Body Color Bumper	-	-	S	S	S	S	S
Passenger Outside Mirror	-	-	-	S	S	-	S
Full Wheel Cover	Hub Cap			S	S	S	S
Roof Antenna	-	-	-	S	S	-	S
Body Color Outside Mirrors	-	-	-	-	S	-	S
Body Color Outside Door Handles	-	-	-	-	S	-	S
INTERIOR							
2-Tone Beige & Black Key Color	S	S	S	S	S	S	S
B & C Pillar Trims	S	S	S	S	S	S	S
Deluxe Floor Console	S	S	S	S	S	S	S
Exclusive Dashboard Storage	S	S	S	S	S	S	S
Exclsuive Pedestal Space	S	S	S	S	S	S	S
Bucket Type Single Unit Front Seats	S	S	S	S	S	S	S
Bench Folding Rear Seat	S	S	S	S	S	S	S
Floor Console Storage	S	S	S	S	S	S	S
Cup Holder	S	S	S	S	S	S	S
Assist Grip	Rear	Rear	S	S	S	Rear	S
Silver Touch on Centre Fascia	-	-	S	S	S	-	S
Front & Rear Speaker Grille	-	Front only		S	S	Front only	S
Front Door Map Pockets with Bottle Holder	-	-	S	S	S	-	S
Moulded Door Trims	-	-	S	S	S	-	S
Rear Parcel Tray	-	-	-	S	S	-	S
Metallic Finish 3-Spoke Steering Wheel	2-Spoke			S	S	2-Spoke	
Metallic Finish Inside Door Handles	-	-	-	-	S	-	-
COMFORT & CONVENIENCE							
Dual Tripmeter	S	S	S	S	S	S	S
Low Fuel Warning	S	S	S	S	S	S	S
Graphic Band Fuel Gauge	S	S	S	S	S	S	S
Gear Shift Indicator	S	S	S	S	S	S	S
Remote Fuel Lid Opener	S	S	S	S	S	S	S
Remote Tail Gate Release	S	S	S	S	S	S	S
Rear Seat Belt Knuckle Holder	S	S	S	S	S	S	S
Power Outlet	-	-	S	S	S	-	S
Air Conditioner	-	S	S	S	S	S	S
Motor Driven (Electric) Power Steering	-	S	S	S	S	S	S
Tilt Steering	-	-	-	-	S	-	-
Internally Adjustable Outside Mirrors	-	-	-	S	S	-	S
Front Power Windows	-	-	S	S	S	-	S

	0.8L iRDE					1.0 L Kappa	
	D-LITE	D-LITE+	ERA+	MAGNA+	SPORTZ	ERA+	MAGNA+(O) (O)
Front Door Full Size Armrest	-	-	S	S	S	-	S
2-DIN Radio+MP3 Audio	-	-	-	S	S	-	S
Front Door Speakers (2)	-	-	-	S	S	-	S
Digital Clock (Audio Display)	-	-	-	S	S	-	S
AUX-in Port	-	-	-	S	S	-	S
USB Port	-	-	-	S	S	-	S

S= Standard, O= Option

TECHNICAL SPECIFICATIONS

ITEMS	0.8L iRDE Petrol	1.0L Kappa Dual VTVT Petrol
DIMENSIONS		
Overall Length (mm)	3,495	3,515
Overall Width (mm)		1,550
Overall Height (mm)	1,500	1,510
Wheelbase (mm)		2,380
Front Track (mm)	1,386	1,376
Rear Track (mm)	1,368	1,458
Fuel Tank Capacity (l)	32	
ENGINE		
Configuration	3 Cyl, 9 Valves	3 Cyl, 12 Valves
Valvetrain Type	SOHC	DOHC
Displacement (cc)	814	998
Maximum Power (ps/rpm)	56/5,500	69/6,200
Maximum Torque (kgm/rpm)	7.6/4,000	9.6/3,500
TRANSMISSION		
Type	5-Speed Manual	
SUSPENSION		
Front	McPherson Strut	
Rear	Torsion Beam Axle	
BRAKES		
Front	Disc	
Rear	Drum	
TYRE		
Size	155/70 R13	
Type	Tubeless	

DIMENSIONS



BODY COLORS



Dealer's Name & Address



**Complete  
Peace of Mind  
for Customers**



**“Highest  
Ranked Entry  
Compact Car  
in Initial Quality  
in a Tie” 2016**

**Disclaimer:** The Hyundai EON received the lowest number of problems per 100 vehicles reflecting higher quality among entry compact cars in a tie in the J.D. Power 2016 India Initials Quality Study, based on 8,330 total responses, evaluating 78 models and measures the options of new 2016 vehicle owners after 90 days of ownership, surveys in May-September 2016. Your experience may vary. Visit [india.jdpower.com](http://india.jdpower.com).



**“Most  
Appealing  
Entry  
Compact  
Car” 2016**

**Disclaimer:** The Hyundai EON received the highest numerical score among entry compact cars in the J.D. Power 2016 India Automotive Performance, Execution and Layout (APEAL) Study, based on 8,330 total responses, evaluating 78 models and measures the opinions of new 2016 vehicle owners after 90 days of ownership, surveys in May-September 2016. Your experience may vary. Visit [india.jdpower.com](http://india.jdpower.com).

For more details,  
please consult your Hyundai Dealers.

**HYUNDAI MOTOR INDIA LTD.**

2nd, 5th & 6th Floor, Corporate One - Baani Building,  
Plot No. 5, Commercial Centre, Jasola, New Delhi-110025  
Visit us at [www.hyundai.co.in](http://www.hyundai.co.in) or call us at 1800-11-4645 (Toll Free) 098-7356-4645.

Some of the equipments illustrated or described in this leaflet may not be supplied as standard equipment and may be available at an extra cost. Hyundai Motor India reserves the right to change specifications and equipment without prior notice. Body colours are trim specific. The colour plates shown may vary slightly from the actual colours due to the limitations of the printing process. Please consult your dealer for full information and availability on colours and trim. \*\*Terms & conditions apply.